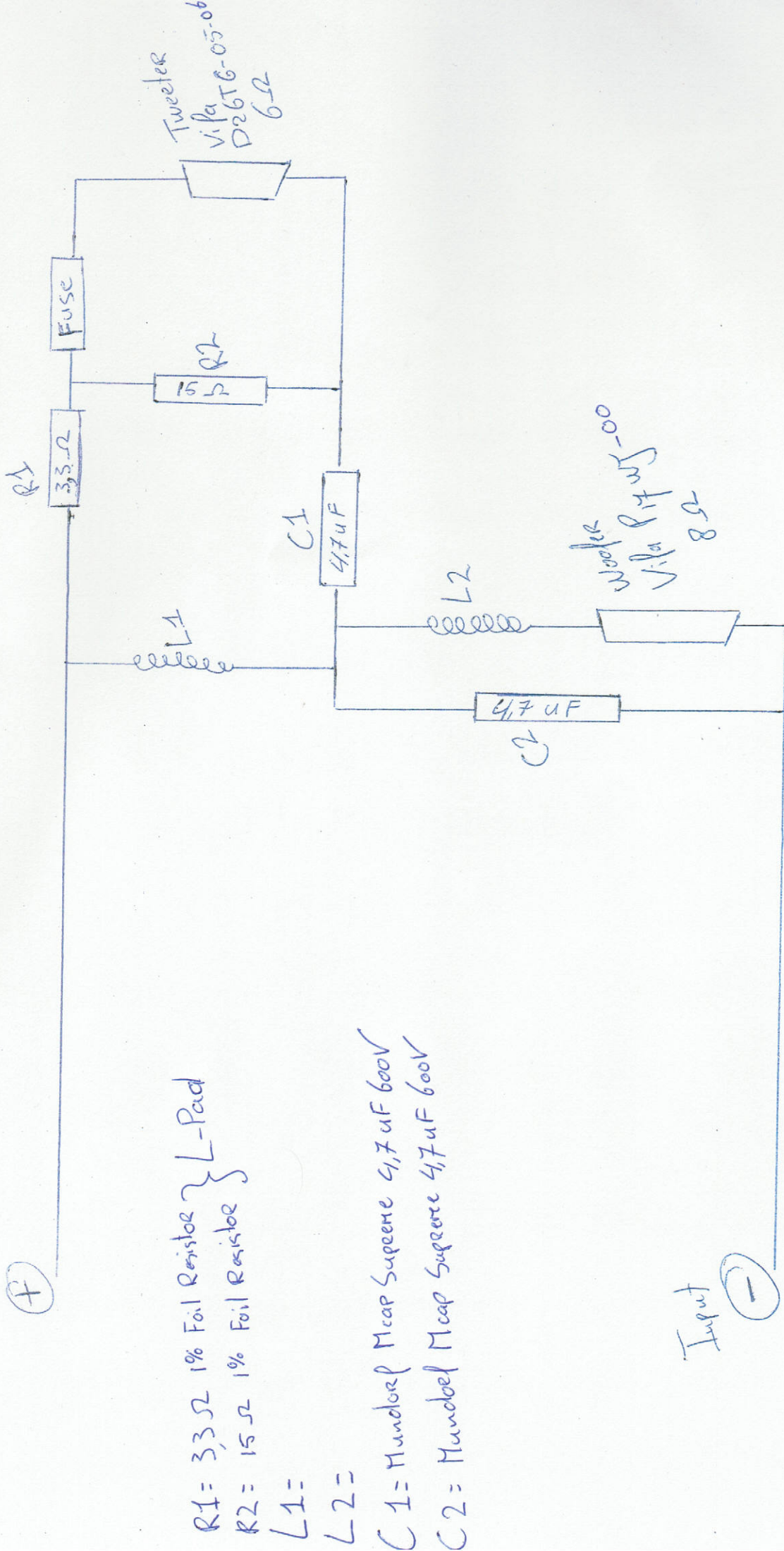


# Synthese Floating Two

2nd Order + L-pad

Input



$R1 = 33\Omega$  1% Foil Resistor } L-Pad  
 $R2 = 15\Omega$  1% Foil Resistor }

$L1 =$

$L2 =$

$C1 =$  Mundorf Mcap Supreme  $4,7\mu F 600V$

$C2 =$  Mundorf Mcap Supreme  $4,7\mu F 600V$

Input

